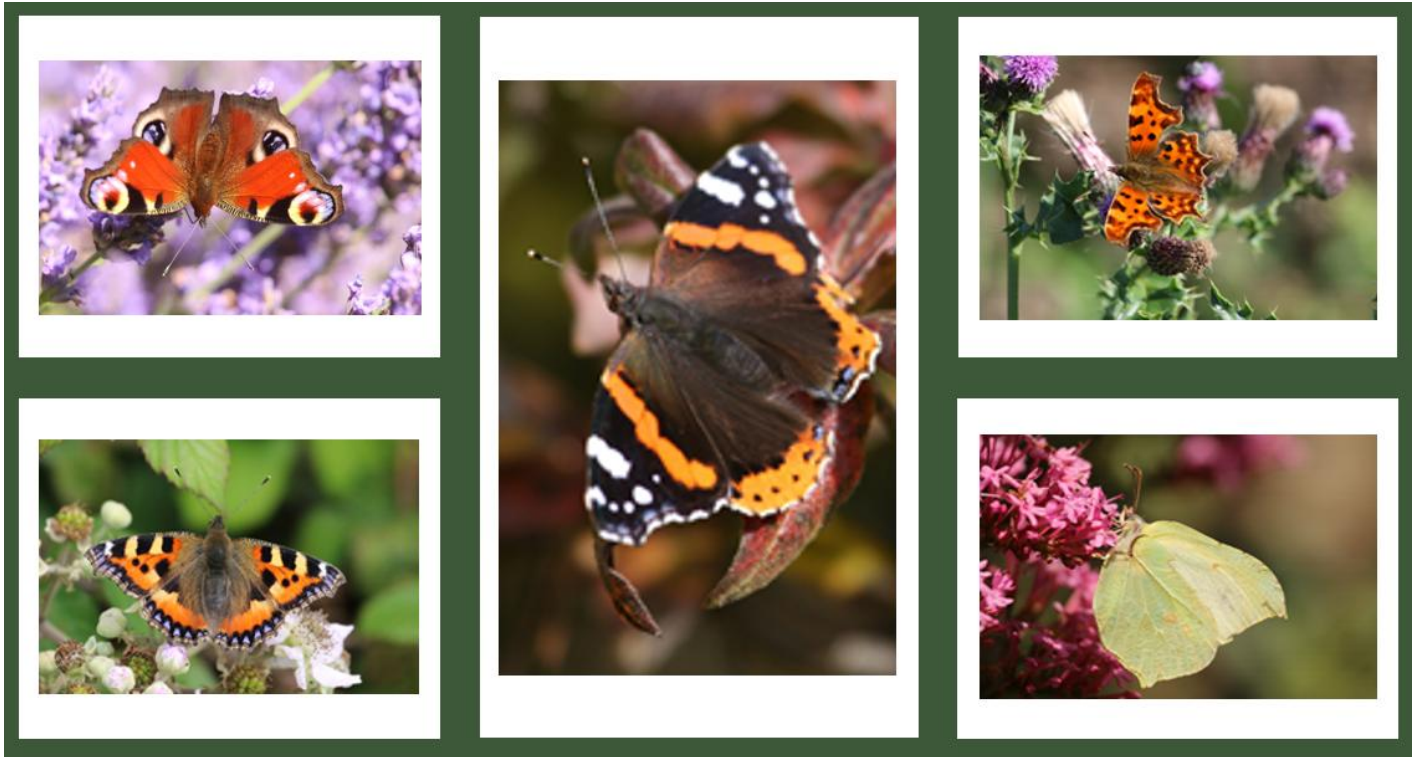


## Advance prediction Spring 2026 (April to June)



*Top left: Peacock, Bottom Left: Small Tortoiseshell, Middle: Red Admiral, Top Right: Comma, Bottom Right: Brimstone*

*Photo credits due to Jim Bishop*

## Species of the Season: The Butterfly

*“No matter how long the winter, spring is sure to follow.”*  
*Proverb*

## Spring 2026 Forecast (April, May & June)

Welcome to the Spring 2026 website entry, covering the months of April, May, and June.

Once the winter period is officially over, I will upload the Winter Forecast Reflections. In the meantime, my January Reflections are already live, which you can view under the '2026 Reflections' tab. January's Notes from Nature has also gone live on [YouTube](#) and [Spotify](#).

### Where We Are Right Now (Mid-February)

I am still waiting for the heavy snowfall of February to arrive. It was forecast to land around 9th February. Today is 12th February, and snow warnings have now come into force.

Whilst it isn't unusual for moon phases to deliver a little late, I would be deeply surprised if they do not deliver at all. As such, I believe the main part of winter still lies ahead. I also expect that because the first predicted snow is running later than anticipated, snow may run well into March 2026.

At this stage, I am expecting a serious cold and snow event, potentially lasting up to three weeks. Of course Northern Scotland have already had a very cold and snowy winter, but I expect the sting in the tail will arrive as forecasted and will include the South too – so be prepared.

This was backed up by the wind direction on Candlemas: easterly, later swinging north-easterly. Candlemas is a very reliable day of prediction indeed, albeit not an official quarter day.

### Why This Matters for Spring

I work a full twelve to eighteen months ahead, as this gives vital foresight into what is to come, and it also helps to explain the current weather.

Given that I am expecting three weeks of bitter cold and snowy conditions imminently, and that these conditions are likely to run into March this year, the soil will remain well below the 6°C needed to start growth.

This is important, because cold soil needs time and warmth to wake up – and nature tends to respond in very predictable ways.

### Harvest Conditions: Strong Signs for 2026

Despite the cold still to come, I am also expecting excellent harvest conditions this year.

There are several reasons for this:

- We had brilliant sunshine from dawn to dusk on Christmas Day 2025.
- The grass was not growing on 1st January, which traditionally signals the likelihood of two good hay harvests later in the year.

- As I walk daily, I have also been keeping a close eye on the fruit trees. The buds are once again plentiful, tight, and waiting patiently, which suggests another excellent fruit harvest is likely.
- St Eulalie's also promised good news for apple and cider this year.

### **March: Cold, Windy, and Drier Than Average**

As such, I expect March to be much drier and colder than average, and likely a windy month too — particularly as the month opens, less so as the month goes on.

Given the strength of the cold expected, blizzard conditions seem likely in places, particularly across the Highlands (as experienced in early January 2026).

### **Spring Will Be Late This Year**

Spring will therefore not properly get started until April – and even then, likely on a cool and wet footing, though with sunshine too.

This is the most straightforward way for nature to kickstart cold soil into action. Warm rain is one of the fastest ways to raise soil temperature, and given the harvest promises being made, the year will need spring to do its job properly.

### **May: A Golden Opening, Then Wetter**

We will likely see a golden opening to May, with the first two weeks being particularly beautiful – though cool evenings are likely.

May is expected to end on a much wetter note, although sunshine should continue throughout.

I will add here that farmers and growers should be aware of the Ice Maidens this year. Fogs in February can mean frosts in May, and we have had a notably foggy start to February – well worth bearing in mind, as overnight frosts seem likely in May.

### **June: Showery Start, Beautiful Finish**

June should open on a showery but sunny note.

However, the last two weeks of June are looking set to be quite beautiful. If I were booking a UK spring staycation, this would be the time I would be most tempted to choose.

(Although please don't base such holiday bookings on my thoughts – I am nowhere near as experienced or reliable as Dave was!)

## **What's Coming Next?**

While the thought of more cold and snow might feel disheartening, the rest of this forecast is likely to unfold just as expected.

- March: The cold continues. Likely a windy month too, so blizzard conditions seem possible, particularly in the Highlands (as experienced in early January 2026).
- April: Cold, wet, with bright spells. Easter is likely to be cool and wet.
- May: Temperatures will tick up, and the first two weeks should be fair – but do bear in mind those cold evenings. Chestnut Sunday is invariably pleasant (but cold overnight). The last two weeks of May will be wetter, but sunshine should continue throughout the month.
- June: The first two weeks will be a mix of sunshine and showers, but the last two weeks should be beautiful. This is likely to be the loveliest part of spring this year.

## **Agriculture & Nature's Warnings**

As mentioned, I work 12–18 months ahead, which helps us understand both current conditions and what's coming next.

Given the long, hard winter persisting into March, soil temperatures will remain below the 6°C required for growth.

To kickstart growth, nature in its wisdom will do what it always does – send warm rain to heat up the cold soil. As a result, a wet spring is inevitable.

I would not recommend planting anything outside until after 14th May this year.

## **Looking Ahead: Key Signs & Seasonal Notes**

- Christmas Day 2025 saw brilliant sunshine from dawn to dusk, which historically signals a brilliant fruit harvest for 2026.
- Buchan Cold Spell (9th–14th May) (also known as the Ice Maidens): potential frost, enough to damage fruit blossoms. Forewarned is forearmed.
- The grass was not growing in the early part of January. As such, farmers can clap their hands: two hay harvests are expected this year (August & October).
- Grain harvest: likely excellent this year.
- Nut harvest: expected to be excellent, given the abundance of hazel catkins.
- If I were booking a UK summer holiday this year, I would be tempted to put my money on:

- the last two weeks of June,
- the week commencing 10th August, or
- the first three weeks of October, which look set to be bright, dry and beautiful (of course, cooler temperatures should be considered normal for the time of year).

Summer should be quite pleasant: showery, sunny, with dry spells in the mix too – everything a good harvest requires. Spits and farts, as Dave would have said. I do not think it will be like the prolonged dry summer of 2025, but it should not be wholly unpleasant either.

### **Spring Adventures & Final Thoughts**

Despite this forecast, spring will arrive eventually.

While it may remain cold until the end of March (and possibly mid-April for those north of the Humber), nature will wake up in its own time.

I look forward to welcoming Spring with open arms this year. To me Spring is all about renewal after a long, dark winter. Longer days, fresh ideas, and hopeful plans for the year ahead. The real New Year... I suppose.

Plus as far as weatherlore goes, April and May hold the keys to the entire year – which is always exciting.

In the meantime, let's:

- get outside as much as possible
- keep taking Vitamin D supplements
- eat healthily to stay strong through the final weeks of winter

Let's live like it's spring, despite the weather.

Best wishes,

*Lesley & Bailey x*

## APRIL 2026

Now for the collated expert notes on April: The first week of April normally brings quite uneventful weather to most districts of Britain, though it remains rather in northern districts, with frost at night, and this can be quite severe in the enclosed valleys and over the Scottish Lowlands generally. Mid-April tends to be unsettled, particularly the period 10-15th April, which produces moderately stormy weather two years in every three, the peak day for storms being the 14th April. Prevailing winds at this time blow generally from between west and north-west, bringing heavy showers, these affecting western districts and high ground facing west coasts in particular. Some of the showers fall as hail. This unsettled weather normally acts as a decided check in the seasonal rise of temperature, for day and night temperatures are cold. Between 10 and 13th April very cold nights are frequent in London and the Home Counties areas. The second half of April normally opens the thunderstorm season in Britain. The third week of April is generally quite bright and sunny, but also gives showers at times, and some of these of a thundery character. There is a risk that that the moderately warm daytime temperatures may be countered by a day or two of colder weather, with snowstorms in some northern and eastern districts around 17-19th April. Every other year there is a period of decidedly cool, unsettled weather between 23 and 26th April, with considerable risk of snowfall in Southern England. The final days of the month normally see better weather, with quickly rising day temperatures and less risk of night frosts in all areas.

*To summarise: April will likely still be very cold for those in North Scotland, and cool for the rest of us too. I expect April to be showery, downright rainy at times, and generally on the cool side. On the bright side (literally), we'll see ever-increasing sunshine as the month goes on. As things stand, Easter is likely to be a cool and showery one. Later in the month, April 23<sup>rd</sup> – 26<sup>th</sup> looks the most likely spell for particularly stormy and cold conditions.*

## APRIL 2026

Full Moon = 2<sup>nd</sup> @ 03:11 = Cold & Showers

3Q Moon = 10<sup>th</sup> @ 05:51 = Rain

New Moon = 17<sup>th</sup> @ 12:51 = Very Rainy

1Q Moon = 24<sup>th</sup> @ 03:31 = Cold & Showers

Highest Spring Tides: 3<sup>rd</sup> – 4<sup>th</sup> & 17<sup>th</sup> – 21<sup>st</sup>

APOGEE: 7<sup>th</sup> @ 08:33      PERIGEE: 19<sup>th</sup> @ 06:58

Lyrids Meteor Shower – 22<sup>nd</sup> & 23<sup>rd</sup>

Met Office Notes: None

BUCHAN NOTES: 11<sup>th</sup> – 14<sup>th</sup> (Blackthorn Winter)

FULL MOON THIS MONTH IS KNOWN AS PINK MOON

## MAY 2026

Now for the collated expert notes on May: The month of May has two notable characteristics: first, there is a rising seasonal temperature trend, but, secondly, a marked degree of day-to-day temperature variation that makes the sequence of warm and cold spells less regular than in most other months of the year. However, there are generally two cold periods. The first occurs 5-9th May, when there are cold winds generally from the north-west, with showers by day and a certain amount of frost at night. A more marked cold period normally sets in around 15-19th May. Winds tend to be gusty, strong, and cold, from the north, with squally showers producing hail, sleet, and snow from time to time, and although accumulations are seldom great in southern England and over lower ground in general, they may be heavy locally over high ground in the north. This period however holds for fruit growers and horticulturalists the most dangerous period of the whole year due to severe night frosts, called the Ice-Maidens, when around 4am the temperature suddenly drops from 4C to minus 4C in less than an hour, and, in so doing burns/kills all the fruit blossoms and tender shoots – hence the advice to refrain from putting out any bedding plants until at best the 26th May. The intervening periods 1-4th May and 10-14th May, produce rather nondescript conditions with no marked temperature or general weather trend. From the 23rd May onwards the weather is often fine and normally gives warm weather with less risk of temperature setbacks than earlier in the month. But the period has been known to produce some notable thunderstorms, at times severe and heavy enough to cause quite considerable local damage and occasional flooding; their greatest impact is in the southern and eastern counties of England.

*To summarise: May is likely to begin on a fairly settled note, with the early part of the month leaning fair and pleasant. However, as we move into the middle of the month, conditions look set to turn more unsettled, with the New Moon on 16<sup>th</sup> bringing an increased risk of rainy spells. The most notable wet spell looks set to fall around 23<sup>rd</sup>, which is showing as very rainy, so keep an eye on that period for heavier rain and a more stubborn, unsettled feel. By the end of the month, the Blue Moon on the 31<sup>st</sup> suggests a shift into more changeable weather – a mix of sunshine and showers. It is worth noting that when you get two full moons in a month, weather conditions can swing wildly from one type of weather pattern to another surprisingly quickly.*

## MAY 2026

Full Moon = 1<sup>st</sup> @ 18:23 = Fair

3Q Moon = 9<sup>th</sup> @ 22:10 = Fair

New Moon = 16<sup>th</sup> @ 21:01 = Rainy

1Q Moon = 23<sup>rd</sup> @ 12:10 = Very Rainy

Full (blue) Moon = 31<sup>st</sup> @ 09:45 = Changeable

DoP: St Urban – 25<sup>th</sup>

Highest Spring Tides: 1<sup>st</sup> – 4<sup>th</sup> & 16<sup>th</sup> – 20<sup>th</sup>

APOGEE: 4<sup>th</sup> @ 22:32      PERIGEE: 17<sup>th</sup> @ 13:49

Eta Aquarids Meteor Shower – 6<sup>th</sup> & 7<sup>th</sup>, Micro Moon – 31<sup>st</sup>

Met Office Notes: None/ BUCHAN NOTES: Cold Period: 9<sup>th</sup> – 14<sup>th</sup> (Ice Maidens)

FULL MOON THIS MONTH IS KNOWN AS FLOWER MOON



## JUNE 2026

Now for the collated expert notes on June: The first week of June tends to be changeable. The first two or three days tending to bring widespread thundery showers to many southern and midland districts and occasionally further north. Then around 3-5th June, there is a change to cooler weather, with fresh north-westerly winds and passing showers in all areas. The drop in temperature at this time is sometimes as much as 6C and in some years frost may occur in sheltered valleys. By 8-10th June there is generally an improvement, and much of this period 8-21st June tends to be moderately fine (Ed note: sadly, in recent years June has tended not to be the 'flaming June' of old but a quite wet month)- not always with spells of drought but with no serious interruptions apart from the odd thunderstorm or showers. From 22nd June to the end of the month there are generally two or four very hot days, but the period is notable for a considerable increase in the risk of heavier type thunderstorms. At times these merge together, and thundery heavy rainfall occurs most often between 27 and 29th June particularly in South Wales and the southern districts of England. Between 30th June and 23 July there is generally a small drop in temperature; this however coincides with the Buchan cold period 29th June to 4th July, hence the propensity for it to rain on the Wimbledon tennis tournament at this time.

*To summarise: June looks set to begin on a changeable note, with 8<sup>th</sup> onwards showing a spell of frequent showers. Mid-month continues this theme, with the New Moon on 15<sup>th</sup> suggesting cooler conditions and rain showers at times. However, from 21<sup>st</sup> onwards, conditions look set to improve significantly, with fair, settled weather taking over. The full moon on 30<sup>th</sup> is also showing fair – suggesting a much nicer second half of June, with bright skies and a summery treat. The summer solstice is looking very promising this year.*

## JUNE 2026

3Q Moon = 8<sup>th</sup> @ 11:00 = Frequent Showers

New Moon = 15<sup>th</sup> @ 03:54 = Cold & Rain Showers

1Q Moon = 21<sup>st</sup> @ 22:55 = Fair

Full Moon = 30<sup>th</sup> @ 00:56 = Fair

DoP = June 24<sup>th</sup> (Wind will be SW – TBC)

Highest Spring Tides: 26<sup>th</sup> – 28<sup>th</sup>

APOGEE: 7<sup>th</sup> @ 11:43      PERIGEE: 23<sup>rd</sup> @ 05:44

Met Office Notes: None

BUCHAN NOTES: Cold Period: 29<sup>th</sup> June – 4<sup>th</sup> July

FULL MOON THIS MONTH IS KNOWN AS BUCK MOON